

DASH #	VOLTAGE (V)	COIL
-1	3-5	7.3Ω
-2	12	55Ω
-3	24	360Ω

REVISIONS			
REV.	DESCRIPTION	DATE	BY
A	.200±.015 WAS .210, ECN: 00149	01/27/23	P.T.

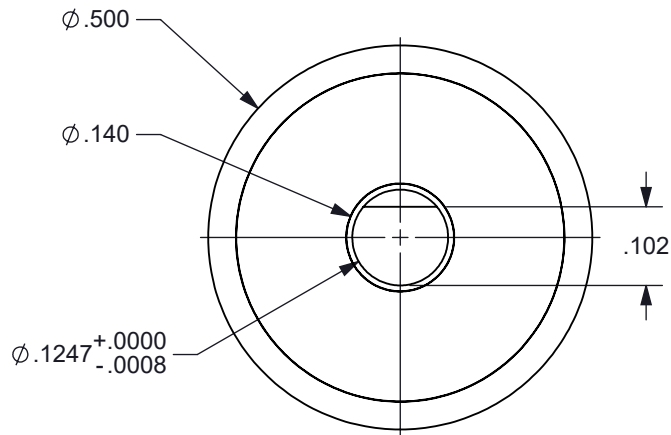
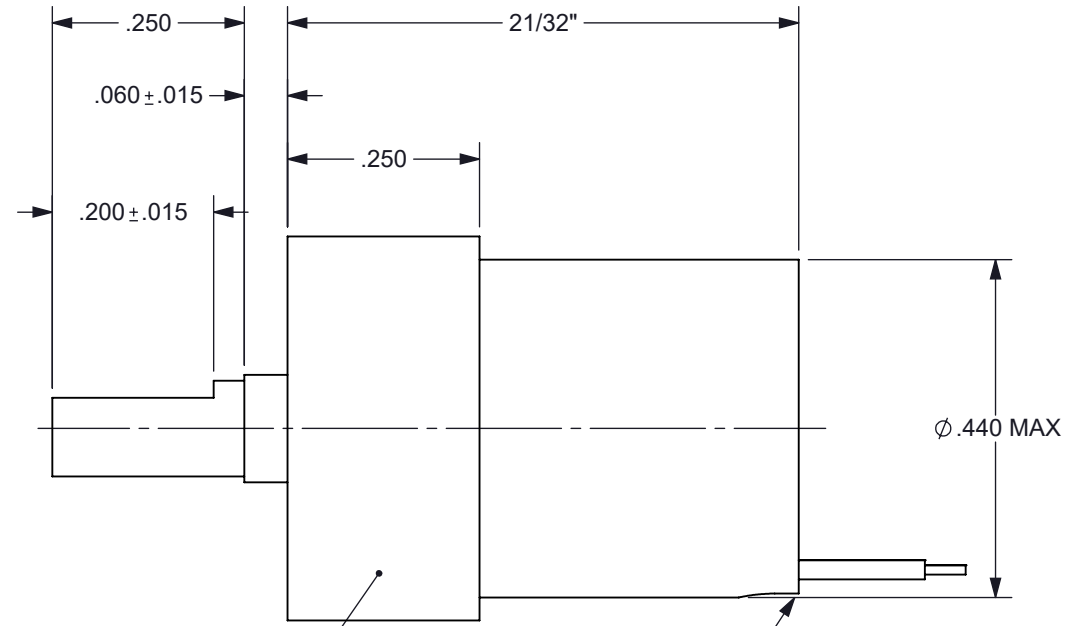
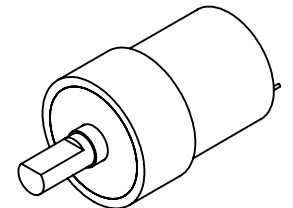


FIGURE 1



USE THIS SURFACE FOR MOUNTING

LEAD EXIT LOCATION IS  
REFERENCE ONLY



#### SPECIFICATIONS

- |                     |  |
|---------------------|--|
| 1. PRODUCT TYPE     | BI-STABLE SOLENOID, LOW OUTGAS   |
| 2. TEMPERATURE      | -40°C TO +71°C OPERATING RANGE   |
| 3. TRAVEL           | 90 ± 2° (CW) FROM POSITION SHOWN IN FIGURE 1   |
| 4. ROTATION         | CW / RED (+) BLACK (-) (, CCW / RED (-) BLACK (+)  |
| 5. VOLTAGE          | SEE CHART ABOVE  |
| 6. COIL             | SEE CHART ABOVE (RESISTANCE ± 10% @ 25°C (CLASS H)   |
| 7. LEADS            | RED AND BLACK 30 ET TEFLON INSULATED WIRE PER M16878/6   |
| 8. LEAD LENGTH      | 12" MIN LONG, STRIPPED AND TINNED 1/8" ± 1/16" AT BOTH ENDS                                    |
| 9. LEAD EXIT        | LEAD EXIT TO BE FILLED WITH 3M 2216 EPOXY  |
| 10. HOUSING MARKING | LASER ENGRAVE BRANDSTROM, P/N, DATE CODE   |
| 11. HOUSING FINISH  | BLACK ANODIZE PER MIL-A-8625F, TYPE II, CLASS II   |
| 12. MAXIMUM MASS    | THE MASS OF ANY ATTACHMENT MUST BE NO MORE THAN 10 GRAMS AND BALANCED ABOUT CENTER OF ROTATION |

**PROPRIETARY DOCUMENT**

DIMENSION TOLERANCES UNLESS OTHERWISE SPECIFIED			
ANGLES	± 1°	2 PLACES	±.010
FRACTIONS	± 1/32	3 PLACES	±.005
1 PLACE	± .015	4 PLACES	±.0005
MATERIAL:	N/A		DRAWN: P.J.T.
FINISH:	N/A		CHECKED: P.T.
DATE: 7/12/21	SCALE: NONE	APPROVED: T.G.A.	
TITLE: BI-STABLE SOLENOID	DWG NO: A1452	SHEET: 1 of 1	REV: A

**Brandstrom  
Instruments**