

DASH #	VOLTAGE (V)	COIL
-1	5	27Ω
-2	12	100Ω
-3	24	600Ω

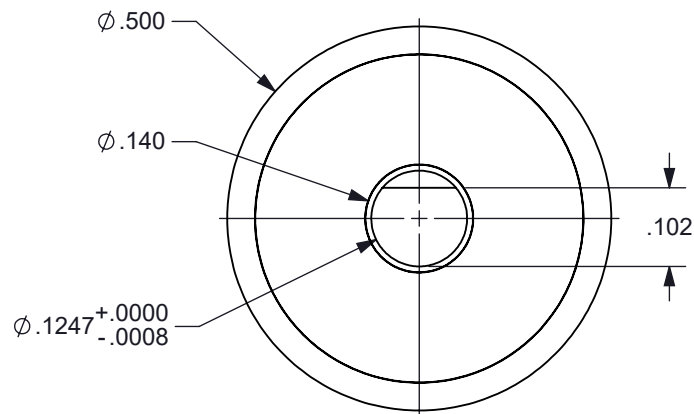
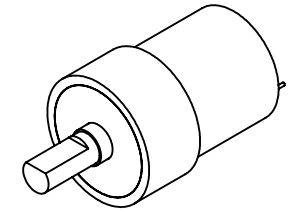
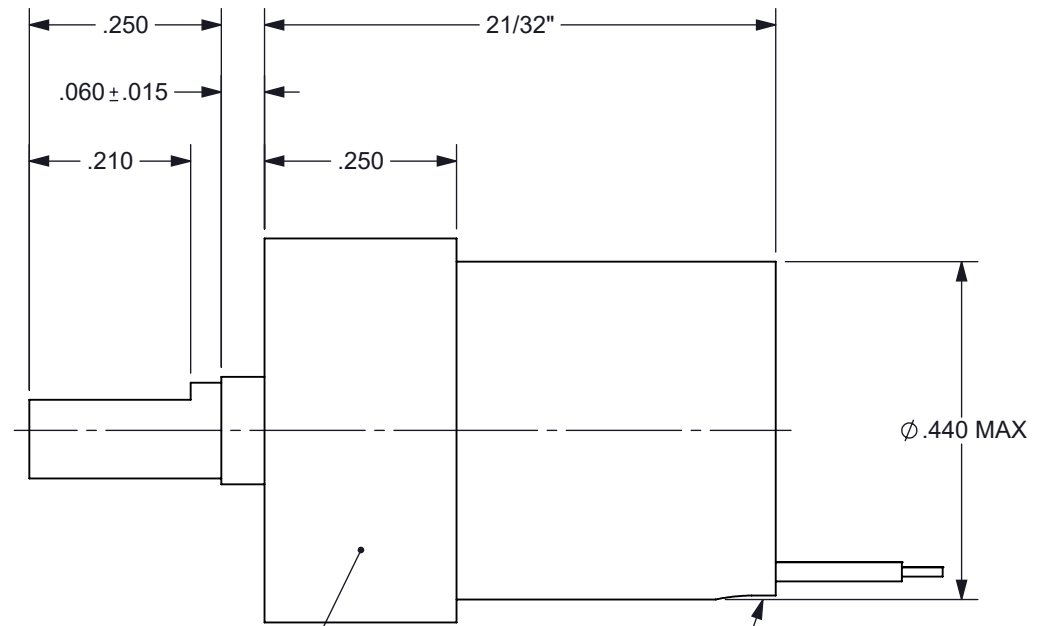


FIGURE 1



USE THIS AREA FOR MOUNTING

LEAD EXIT LOCATION IS  
REFERENCE ONLY

#### SPECIFICATIONS

1. PRODUCT TYPE	SELF-RESTORING SOLENOID, LOW OUTGAS
2. TEMPERATURE	-40°C TO +71°C OPERATING RANGE
3. TRAVEL	45 ± 2° (CW) FROM POSITION SHOWN IN FIGURE 1
4. ROTATION	CW / RED (+) BLACK (-)
5. VOLTAGE	SEE CHART ABOVE
6. COIL	SEE CHART ABOVE [RESISTANCE ± 10% @ 25°C (CLASS H)]
7. LEADS	RED AND BLACK 30 ET TEFLON INSULATED WIRE PER M16878/6
8. LEAD LENGTH	12" MIN, STRIPPED AND TINNED 1/8" ± 1/16" AT BOTH ENDS
9. LEAD EXIT	LEAD EXIT TO BE FILLED WITH GREY EPOXY 3M 2216
10. HOUSING MARKING	LASER ENGRAVE BRANDSTROM, P/N, DATE CODE
11. HOUSING FINISH	BLACK ANODIZE PER MIL-A-8625F, TYPE II, CLASS II
12. MAXIMUM MASS	THE MASS OF ANY ATTACHMENT MUST BE NO MORE THAN 10 GRAMS AND BALANCED ABOUT CENTER OF ROTATION

**PROPRIETARY DOCUMENT**

DIMENSION TOLERANCES UNLESS OTHERWISE SPECIFIED				<b>Brandstrom Instruments</b>			
ANGLES	± 1°	2 PLACES	± .010				
FRACTIONS	± 1/32	3 PLACES	± .005				
1 PLACE	± .015	4 PLACES	± .0005				
MATERIAL:	N/A			DRAWN:	P.T.		
FINISH:	N/A			CHECKED:	P.T.		
DATE:	5/20/19	SCALE:	NONE	APPROVED:	T.G.A.		
TITLE:	SELF-RESTORING SOLENOID			DWG NO:	A1375	SHEET:	1 of 1
						REV:	