

| DASH # | VOLTAGE (V) | COIL |
|--------|-------------|------|
| -1 | 5 | 27Ω |
| -2 | 12 | 100Ω |
| -3 | 24 | 600Ω |

| REVISIONS | | | |
|-----------|--------------------------------|----------|------|
| REV. | DESCRIPTION | DATE | BY |
| A | .200±.015 WAS .210, ECN: 00149 | 01/27/23 | P.T. |

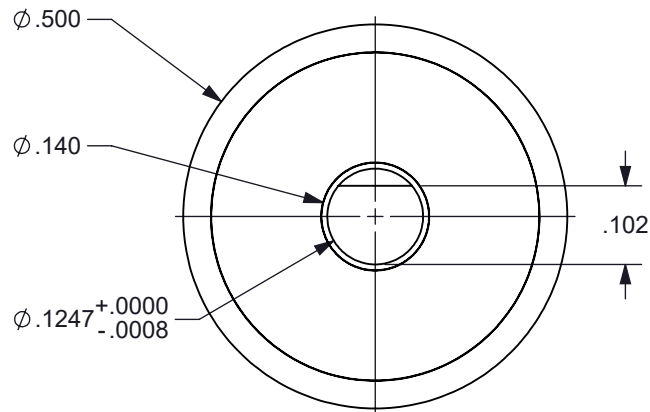
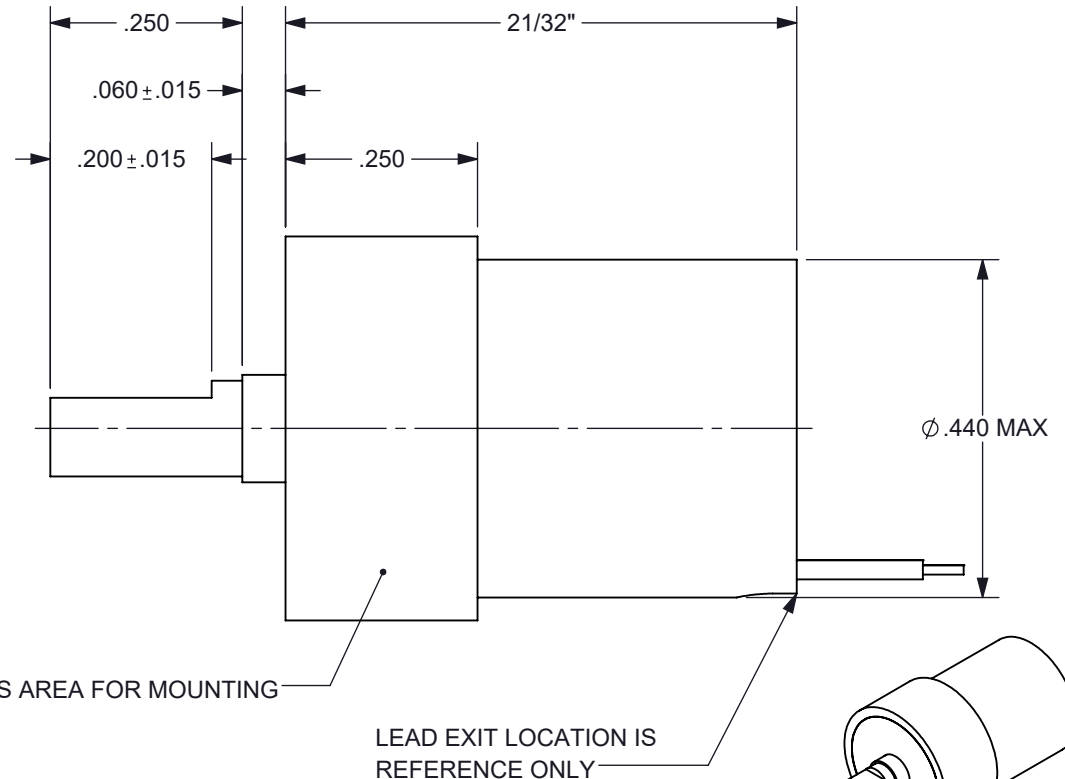


FIGURE 1



SPECIFICATIONS

- | | |
|---------------------|--|
| 1. PRODUCT TYPE | SELF-RESTORING SOLENOID |
| 2. TEMPERATURE | -40°C TO +71°C OPERATING RANGE |
| 3. TRAVEL | 30 ± 2° (CW) FROM POSITION SHOWN IN FIGURE 1 |
| 4. ROTATION | CW / RED (+) BLACK (-) |
| 5. VOLTAGE | SEE CHART ABOVE |
| 6. COIL | SEE CHART ABOVE [RESISTANCE ± 10% @ 25°C (CLASS H)] |
| 7. LEADS | RED AND BLACK 30 ET TEFLON INSULATED WIRE PER M16878/6 |
| 8. LEAD LENGTH | 12" MIN, STRIPPED AND TINNED 1/8" ± 1/16" AT BOTH ENDS |
| 9. LEAD EXIT | LEAD EXIT TO BE FILLED WITH SILICONE ADHESIVE |
| 10. HOUSING MARKING | LASER ENGRAVE BRANDSTROM, P/N, DATE CODE |
| 11. HOUSING FINISH | BLACK ANODIZE PER MIL-A-8625F, TYPE II, CLASS II |
| 12. MAXIMUM MASS | THE MASS OF ANY ATTACHMENT MUST BE NO MORE THAN 10 GRAMS AND BALANCED ABOUT CENTER OF ROTATION |

PROPRIETARY DOCUMENT

| DIMENSION TOLERANCES UNLESS OTHERWISE SPECIFIED | | | | | | | |
|--|--------|-------------------------|---------|----------|-----------|--------|--------|
| ANGLES | ± 1° | 2 PLACES | ± .010 | | | | |
| FRACTIONS | ± 1/32 | 3 PLACES | ± .005 | | | | |
| 1 PLACE | ± .015 | 4 PLACES | ± .0005 | | | | |
| MATERIAL: | | N/A | | DRAWN: | | P.J.T. | |
| FINISH: | | N/A | | CHECKED: | | P.T. | |
| DATE: | | 4/7/16 | SCALE: | NONE | APPROVED: | | T.G.A. |
| TITLE: | | SELF-RESTORING SOLENOID | | DWG NO: | | A1285 | SHEET: |
| | | | | | | 1 of 1 | |
| | | | | | | REV: | |
| | | | | | | A | |