

DASH #	VOLTAGE (V)	COIL @25°C (CLASS C)
-1	5	30Ω
-2	12	225Ω
-3	24	225Ω

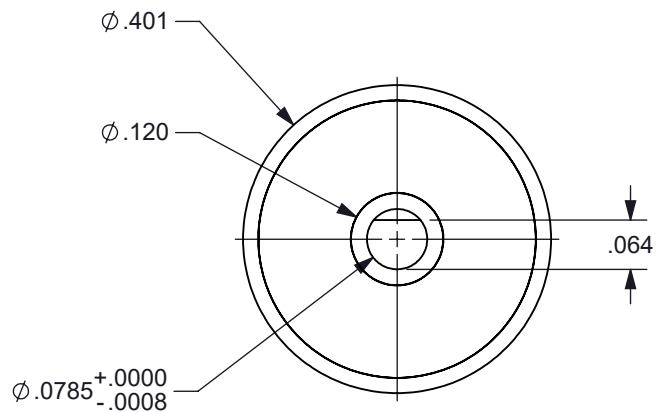
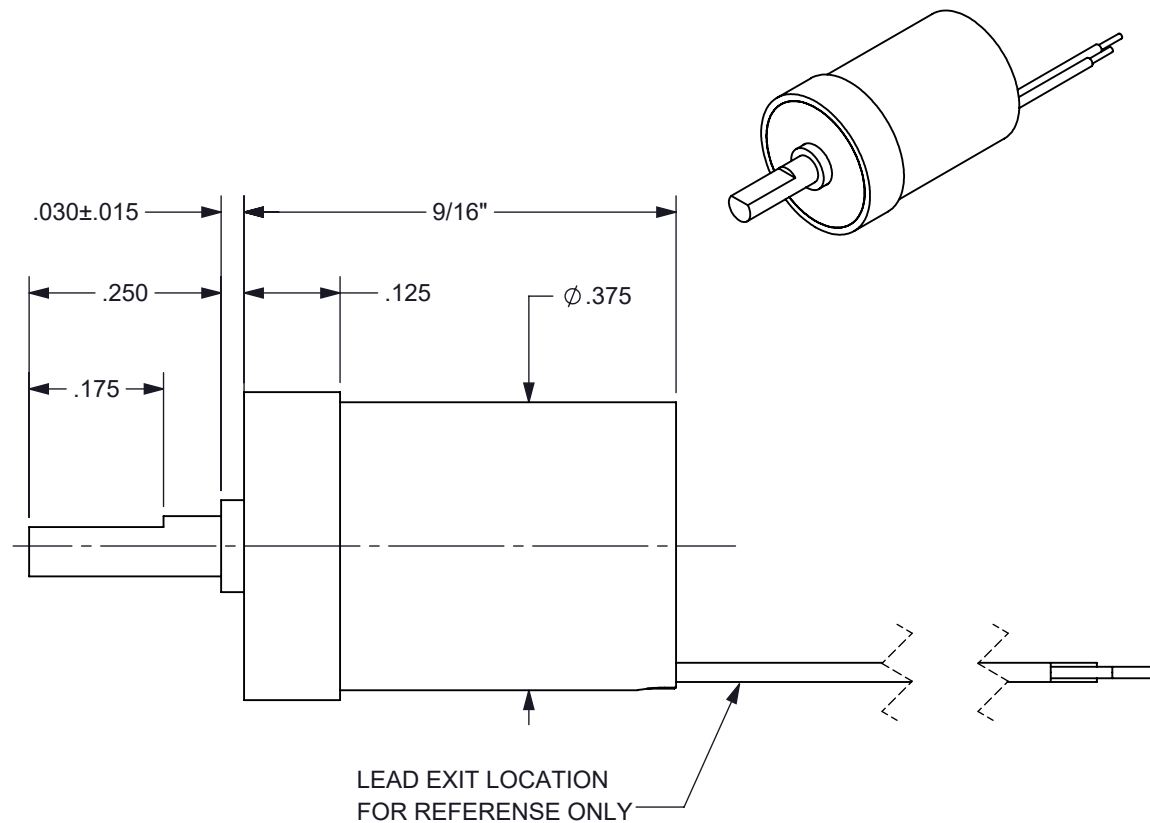



FIGURE 1



PROPRIETARY DOCUMENT

SPECIFICATIONS

1. PRODUCT TYPE	BI-STABLE SOLENOID
2. TEMPERATURE	-40°C TO +65°C OPERATING RANGE
3. TRAVEL	45 ± 2° CW FROM POSITION SHOWN IN FIGURE 1
4. ROTATION	CW / RED (+) BLACK (-)
5. VOLTAGE	SEE CHART ABOVE
6. COIL	SEE CHART ABOVE
7. LEADS	RED AND BLACK 30 ET TEFLON INSULATED WIRE PER M16878/6
8. LEAD LENGTH	12" MIN STRIPPED AND TINNED 1/4" ± 1/8"
9. HOUSING MARKING	BRANDSTROM, P/N DATE CODE
10. HOUSING FINISH	BLACK ANODIZE PER MIL-A-8625F, TYPE II, CLASS II

DIMENSION TOLERANCES UNLESS OTHERWISE SPECIFIED						
ANGLES	± 1°				2 PLACES	± .010
FRACTIONS	± 1/32				3 PLACES	± .005
1 PLACE	± .015				4 PLACES	± .0005
MATERIAL: SEE SPECS		DRAWN: P.T.				
FINISH: SEE SPECS		CHECKED: C.N.M.				
DATE: 04/07/14	SCALE: NONE		APPROVED: T.G.A.			
TITLE: BI-STABLE SOLENOID		DWG NO: A1269	SHEET: 1 of 1	REV: A		