

DASH #	VOLTAGE (V)	COIL @25°C (CLASS C)
-1	5	30Ω
-2	12	225Ω
-3	24	360Ω

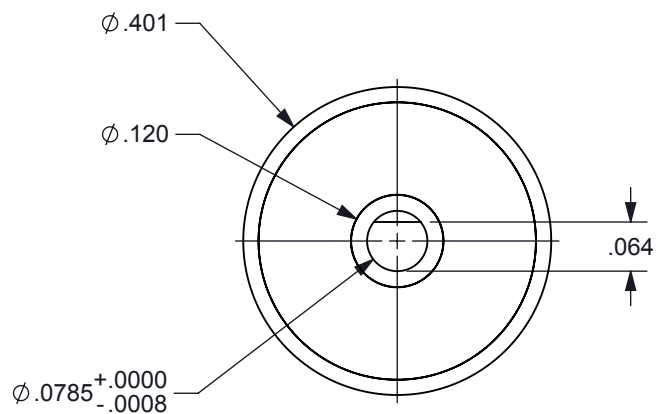
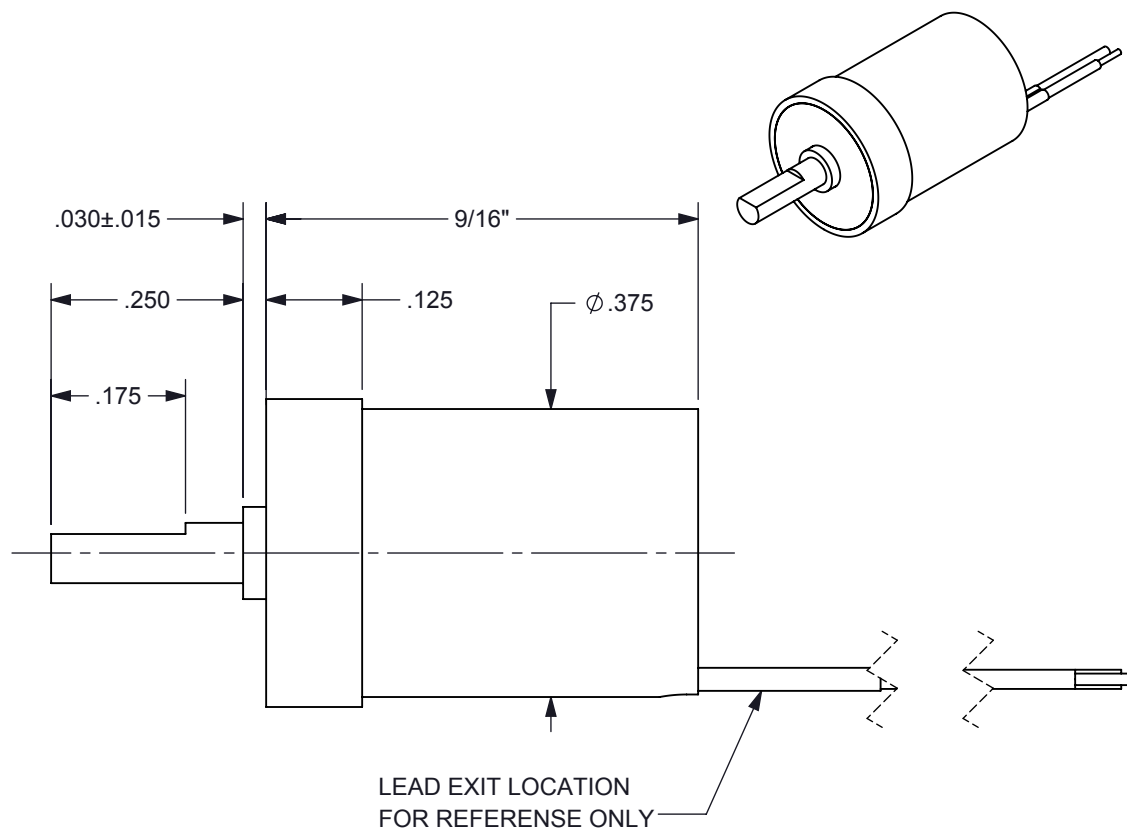


FIGURE 1



**PROPRIETARY DOCUMENT**

#### SPECIFICATIONS

1. PRODUCT TYPE	BI-STABLE SOLENOID
2. TEMPERATURE	-40°C TO +65°C OPERATING RANGE
3. TRAVEL	60 ± 2° CW FROM POSITION SHOWN IN FIGURE 1
4. ROTATION	CW / RED (+) BLACK (-)
5. VOLTAGE	SEE CHART ABOVE
6. COIL	SEE CHART ABOVE
7. LEADS	RED AND BLACK 30 ET TEFLON INSULATED WIRE PER M16878/6
8. LEAD LENGTH	12" MIN STRIPPED AND TINNED 1/4" ± 1/8"
9. HOUSING MARKING	BRANDSTROM, P/N DATE CODE
10. HOUSING FINISH	BLACK ANODIZE PER MIL-A-8625F, TYPE II, CLASS II

DIMENSION TOLERANCES UNLESS OTHERWISE SPECIFIED				<b>Brandstrom Instruments</b>		
ANGLES	± 1°	2 PLACES	± .010			
FRACTIONS	± 1/32	3 PLACES	± .005			
1 PLACE	± .015	4 PLACES	± .0005			
MATERIAL:		SEE SPECS		DRAWN: P.T.		
FINISH:		SEE SPECS		CHECKED: P.T.		
DATE:	02/21/18	SCALE:	NONE	APPROVED: T.G.A.		
TITLE:		BI-STABLE SOLENOID		DWG NO:	A1268	SHEET: 1 of 1
						REV: