

DASH #	VOLTAGE (V)	COIL @25°C (CLASS C)
-1	5	30Ω
-2	12	225Ω
-3	24	360Ω

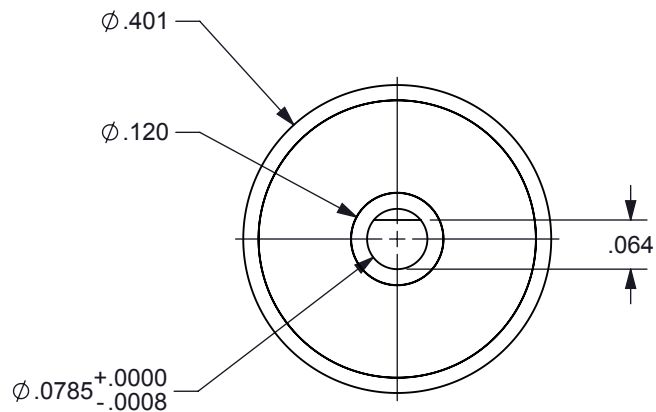
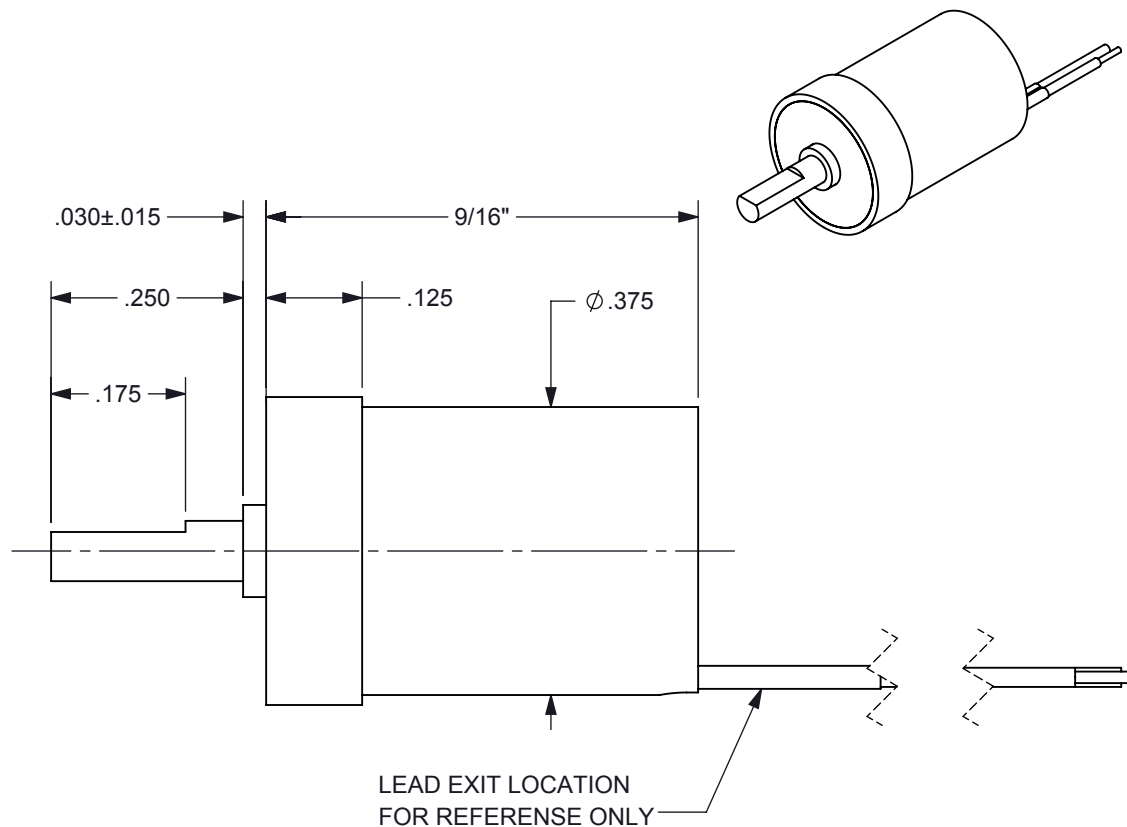


FIGURE 1



PROPRIETARY DOCUMENT

SPECIFICATIONS

1. PRODUCT TYPE	BI-STABLE SOLENOID
2. TEMPERATURE	-40°C TO +65°C OPERATING RANGE
3. TRAVEL	90 ± 2° CW FROM POSITION SHOWN IN FIGURE 1
4. ROTATION	CW / RED (+) BLACK (-)
5. VOLTAGE	SEE CHART ABOVE
6. COIL	SEE CHART ABOVE
7. LEADS	RED AND BLACK 30 ET TEFLON INSULATED WIRE PER M16878/6
8. LEAD LENGTH	12" MIN STRIPPED AND TINNED 1/4" ± 1/8"
9. HOUSING MARKING	BRANDSTROM, P/N DATE CODE
10. HOUSING FINISH	BLACK ANODIZE PER MIL-A-8625F, TYPE II, CLASS II

DIMENSION TOLERANCES UNLESS OTHERWISE SPECIFIED				Brandstrom Instruments		
ANGLES	± 1°	2 PLACES	±.010			
FRACTIONS	± 1/32	3 PLACES	±.005			
1 PLACE	± .015	4 PLACES	±.0005			
MATERIAL:	SEE SPECS			DRAWN:	P.T.	
FINISH:	SEE SPECS			CHECKED:	P.T.	
DATE:	02/21/18	SCALE:	NONE	APPROVED:	T.G.A.	
TITLE:	BI-STABLE SOLENOID			DWG NO:	A1267	SHEET: 1 of 1