

DASH #	VOLTAGE (V)	COIL
-1	5	7.3Ω
-2	12	55Ω
-3	24	360Ω

REVISIONS			
REV.	DESCRIPTION	DATE	BY
A	.200±.015 WAS .210, ECN: 00149	01/27/23	P.T.

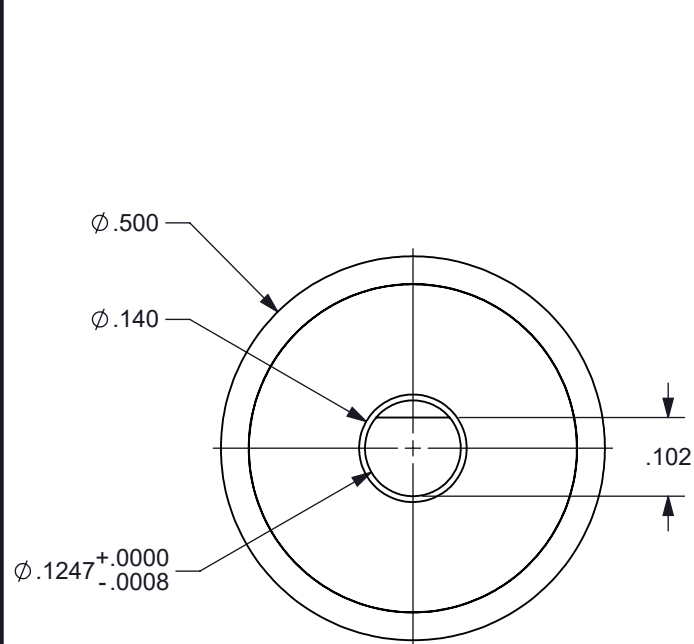
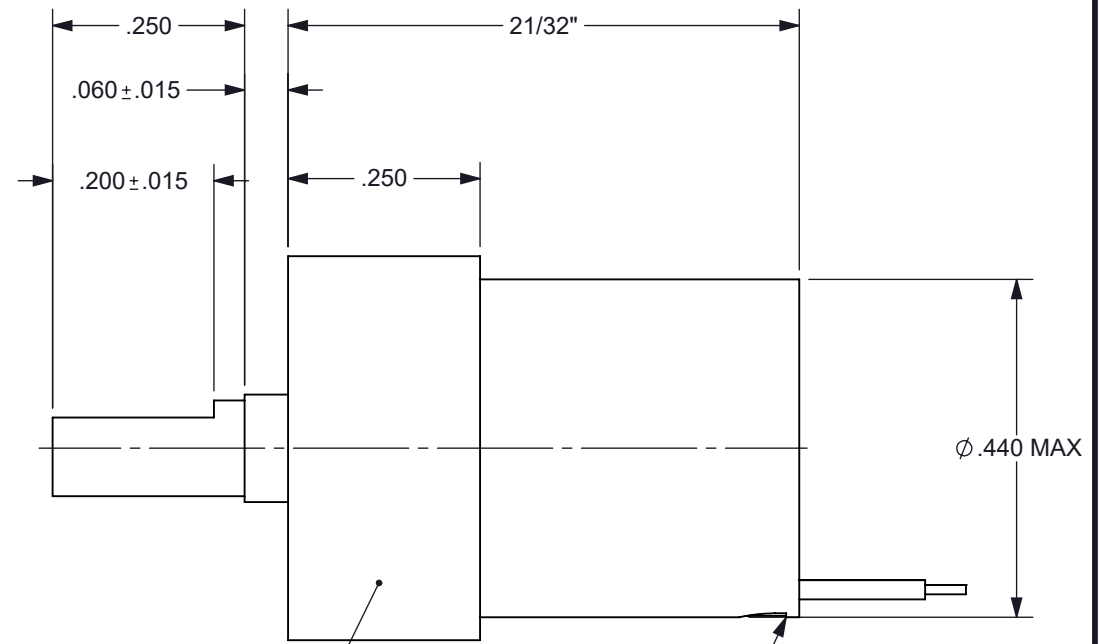
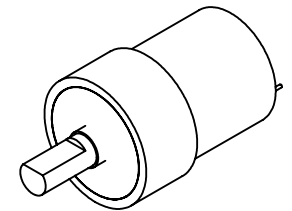


FIGURE 1



USE THIS AREA FOR MOUNTING

LEAD EXIT LOCATION IS
REFERENCE ONLY



SPECIFICATIONS

- PRODUCT TYPE: BI-STABLE SOLENOID
- TEMPERATURE: -40°C TO +71°C OPERATING RANGE
- TRAVEL: 45 ± 2° (CW) FROM POSITION SHOWN IN FIGURE 1
- ROTATION: CW / RED (+) BLACK (-)
- VOLTAGE: SEE CHART ABOVE
- COIL: SEE CHART ABOVE [RESISTANCE ± 10% @ 25°C (CLASS H)]
- LEADS: RED AND BLACK 30 ET TEFLON INSULATED WIRE PER M16878/6
- LEAD LENGTH: 12" MIN, STRIPPED AND TINNED 1/8" ± 1/16" AT BOTH ENDS
- LEAD EXIT: LEAD EXIT TO BE FILLED WITH GREY EPOXY 3M 2216
- HOUSING MARKING: LASER ENGRAVE BRANDSTROM, P/N, DATE CODE
- HOUSING FINISH: BLACK ANODIZE PER MIL-A-8625F, TYPE II, CLASS II
- MAXIMUM MASS: THE MASS OF ANY ATTACHMENT MUST BE NO MORE THAN 10 GRAMS AND BALANCED ABOUT CENTER OF ROTATION

PROPRIETARY DOCUMENT

DIMENSION TOLERANCES UNLESS OTHERWISE SPECIFIED			
ANGLES	± 1°	2 PLACES	±.010
FRACTIONS	± 1/32	3 PLACES	±.005
1 PLACE	± .015	4 PLACES	±.0005
MATERIAL:	N/A		DRAWN: P.J.T.
FINISH:	N/A		CHECKED: P.T.
DATE: 3/9/16	SCALE: NONE	APPROVED: T.G.A.	
TITLE: BI-STABLE SOLENOID	DWG NO: A1265	SHEET: 1 of 1	REV: A

**Brandstrom
Instruments**