

DASH NUMBER	SHUTTER
NONE	YES
-1	NO

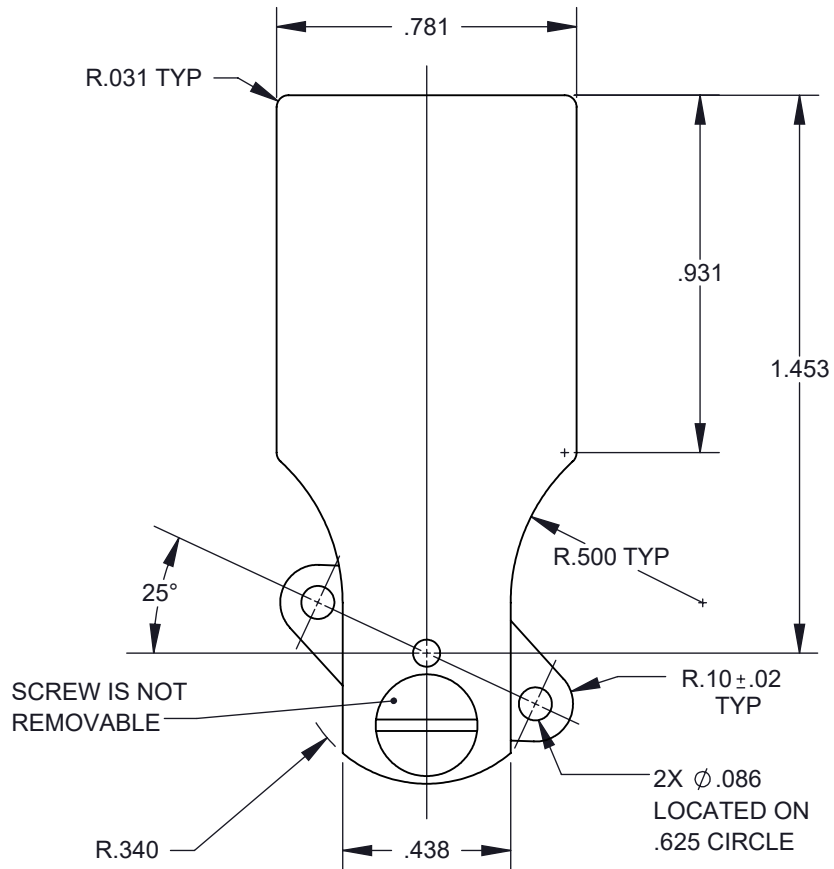
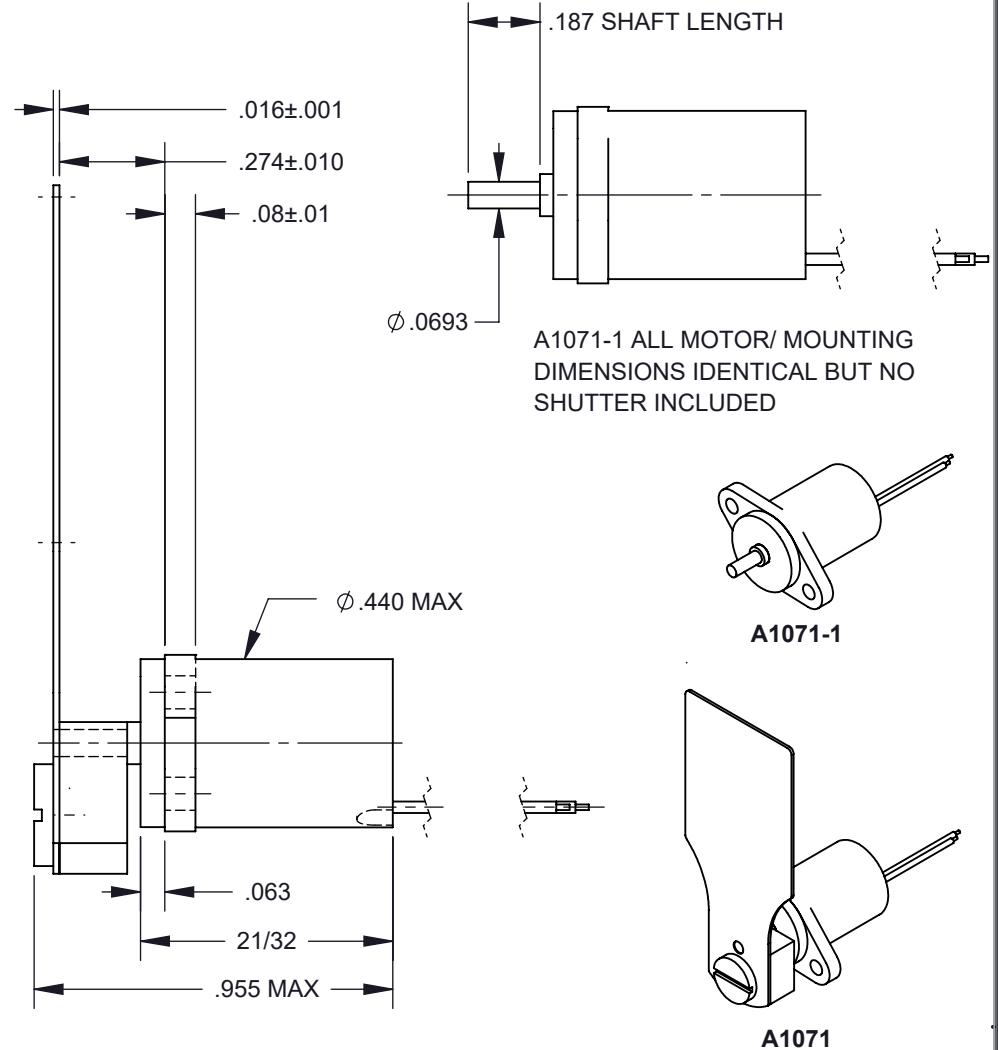


FIGURE 1



A1071-1

A1071

**SPECIFICATIONS**

- |                    |  |
|--------------------|--|
| 1. PRODUCT TYPE    | BI-STABLE SHUTTER, LOW OUTGASSING                      |
| 2. TEMPERATURE     | -20° C TO +65° C OPERATING RANGE                       |
| 3. TRAVEL          | 50 ± 2° CW FROM POSITION SHOWN IN FIGURE 1             |
| 4. ROTATION        | CW / RED (+) BLACK (-), CCW / RED (-) BLACK (+)        |
| 5. VOLTAGE         | 3.3 VDC (PULSE FOR 50 MS)                              |
| 6. COIL            | 7.3Ω ± 4% @ 25°C (CLASS H)                             |
| 7. LEADS           | RED AND BLACK 30 ET TEFLON INSULATED WIRE PER M16878/6 |
| 8. LEAD LENGTH     | 4.25" ± 0.25" STRIPPED AND TINNED 1/8" ± 1/16"         |
| 9. HOUSING FINISH  | BLACK ANODIZE PER MIL-A-8625F, TYPE II, CLASS II       |
| 10. SHUTTER FINISH | BLACK ANODIZE PER MIL-A-8625F, TYPE II, CLASS II       |

DIMENSION TOLERANCES UNLESS OTHERWISE SPECIFIED	
ANGLES ± 1°	2 PLACES ± .010
FRACTIONS ± 1/32	3 PLACES ± .005
1 PLACE ± .015	4 PLACES ± .0005
MATERIAL:	N/A
FINISH:	N/A
DATE: 12/23/10	SCALE: NONE
TITLE:	BI-STABLE SHUTTER

**Brandstrom Instruments**

DRAWN:	E.A.R.
CHECKED:	T.G.A.
APPROVED:	T.G.A.
DWG NO:	A1071
SHEET:	1 OF 1