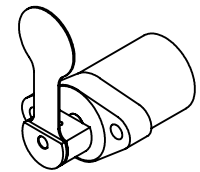
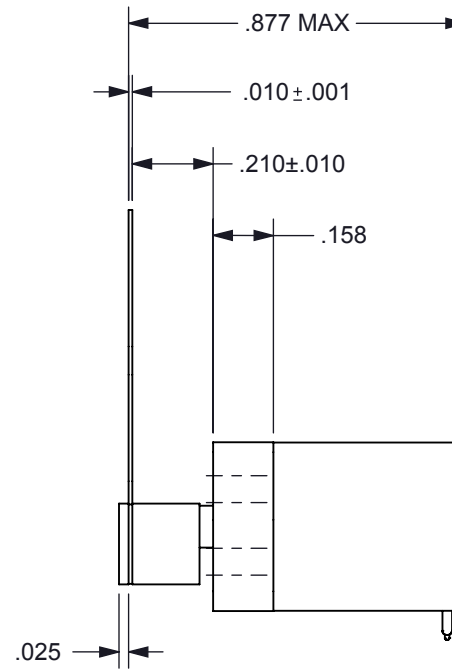


FIGURE 1



SPECIFICATIONS

1. PRODUCT TYPE	BI-STABLE SHUTTER LOW OUTGASSING
2. TEMPERATURE	-20°C TO +54°C OPERATING RANGE
3. TRAVEL	35 ± 2° CCW FROM POSITION SHOWN IN FIGURE 1
4. ROTATION	CW / RED (+) BLACK (-), CCW / RED (-) BLACK (+)
5. VOLTAGE	5 VDC ± 5% (PULSE FOR 50 MS), MAX DUTY CYCLE: 10%
6. COIL	12Ω ± 10% @ 25°C (CLASS H)
7. LEADS	RED AND BLACK 30 ET TEFLON INSULATED WIRE PER M16878/6
8. LEAD LENGTH	6.0" MIN., STRIPPED AND TINNED 1/8" ± 1/16" AT BOTH ENDS
9. LEAD EXIT	(LEAD EXIT TO BE FILLED WITH 3M 2216 B/A GRAY EPOXY ADHESIVE
10. HOUSING MARKING	TO BE LASER ENGRAVED
11. HOUSING FINISH	BLACK ANODIZE PER MIL-A-8625F, TYPE II, CLASS II
12. SHUTTER FINISH	BLACK ANODIZE PER MIL-A-8625F, TYPE II, CLASS II

PROPRIETARY DOCUMENT

DIMENSION TOLERANCES UNLESS OTHERWISE SPECIFIED ANGLES ± 1° 2 PLACES ± .010 FRACTIONS ± 1/32 3 PLACES ± .005 1 PLACE ± .015 4 PLACES ± .0005						
MATERIAL: N/A		DRAWN: P.T.				
FINISH: N/A		CHECKED: T.G.A.				
DATE: 11/06/09	SCALE: NONE	APPROVED: T.G.A.				
TITLE: BI-STABLE SHUTTER		DWG NO: A1061-1	SHEET: 1 of 1	REV: A		