



## TECHNICAL DATA

### Sample Geometry (90°, BI-STABLE)

| DASH # | VOLATGE (V) | COIL |
|--------|-------------|------|
| -1     | 3-5         | 7.3Ω |
| -2     | 12          | 55Ω  |
| -3     | 24          | 360Ω |

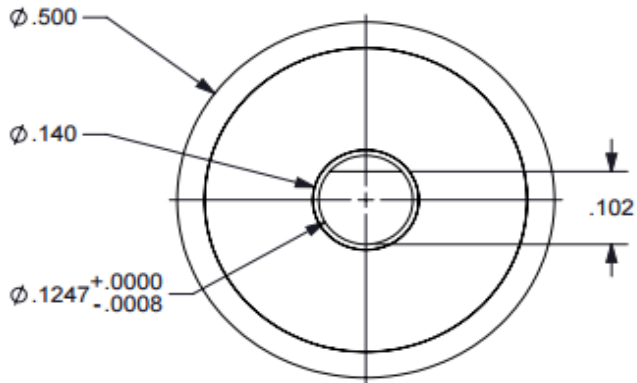
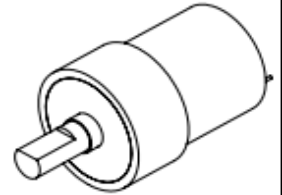
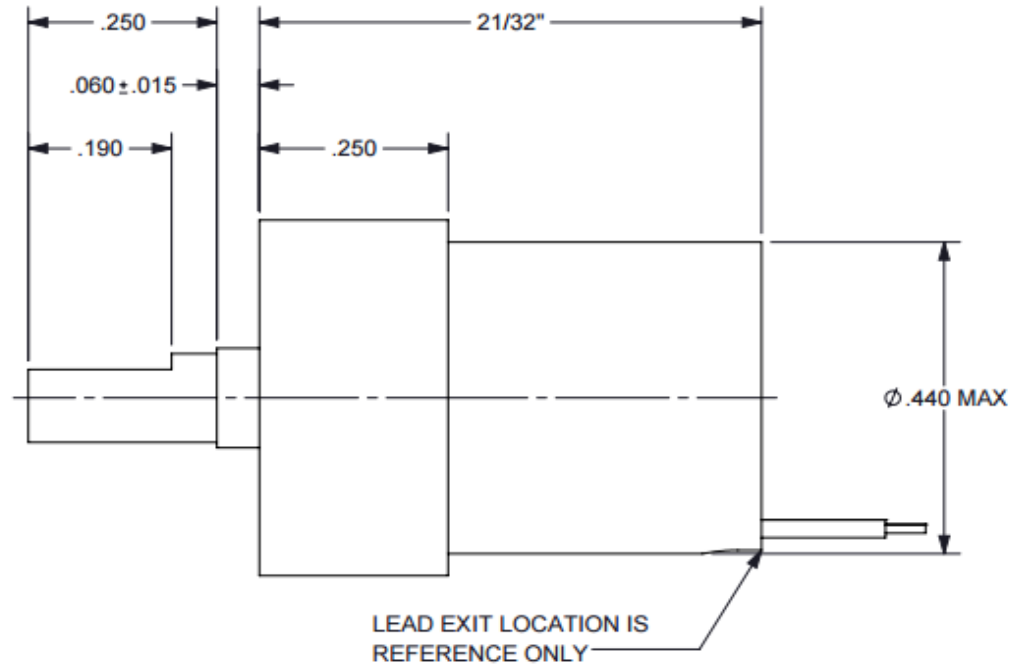


FIGURE 1

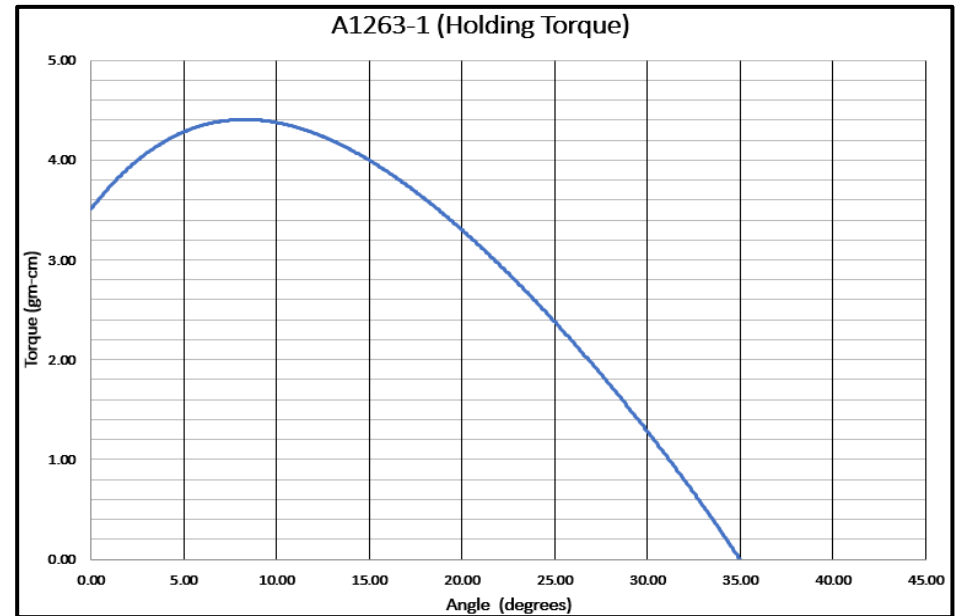
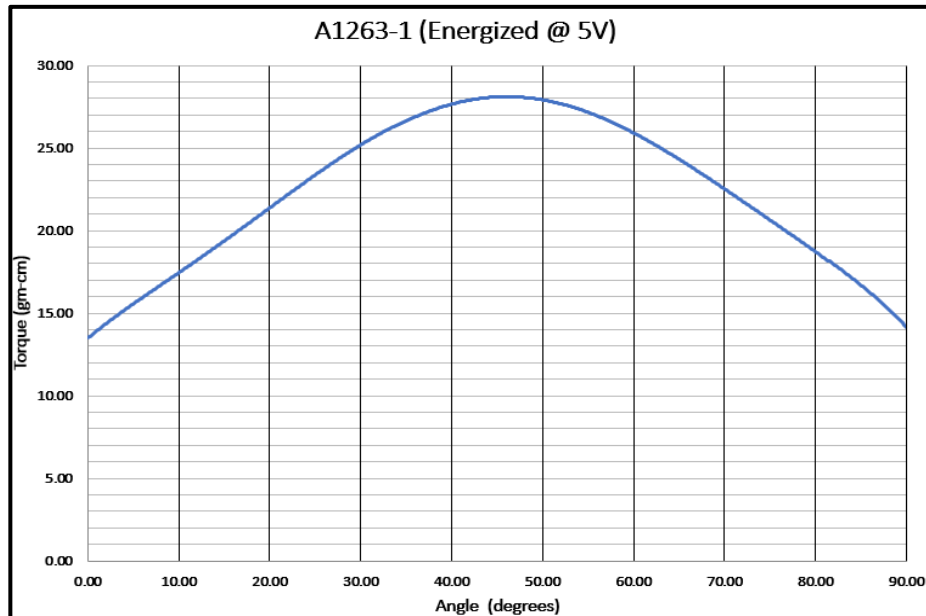


Note: Brandstrom Instruments reserves the right to make changes to this information at any time without notification.

## Sample Torque Data

| Model # | Electrical Specifications |                |                | Actuation Torque (grF-cm) |      | Actuation Torque (Peak) (grF-cm) |     | Holding Torque (grF-cm) |      |
|---------|---------------------------|----------------|----------------|---------------------------|------|----------------------------------|-----|-------------------------|------|
|         | Resistance ( $\Omega$ )   | Volatage (VDC) | Power Used (W) | CW                        | CCW  | CW                               | CCW | CW                      | CCW  |
| A1263-1 | 7.3                       | 3.0            | 1.2            | 4.8                       | 6.0  | 23                               | 23  | 8.0                     | 8.0  |
|         |                           | 5.0            | 3.4            | 12.0                      | 13.0 | 27                               | 28  |                         |      |
| A1263-2 | 55.0                      | 9.0            | 1.5            | 2.5                       | 3.0  | 27                               | 28  | 12.0                    | 12.0 |
|         |                           | 12.0           | 2.6            | 8.0                       | 7.0  | 29                               | 29  |                         |      |
|         |                           | 14.0           | 3.6            | 10.0                      | 10.0 | 30                               | 30  |                         |      |
| A1263-3 | 360.0                     | 18.0           | 0.9            | 0.6                       | 0.6  | 22                               | 22  | 12.0                    | 12.0 |
|         |                           | 24.0           | 1.6            | 4.0                       | 5.0  | 24                               | 26  |                         |      |
|         |                           | 30.0           | 2.5            | 8.0                       | 8.0  | 26                               | 27  |                         |      |

## Sample Torque Curves



Note: Brandstrom Instruments reserves the right to make changes to this information at any time without notification.